



Kornberg School of Dentistry

Office of Admissions, Diversity and
Student Affairs
3223 N. Broad Street
Philadelphia, PA 19140
215-707-2952

TO Kornberg School of Dentistry New Students

FROM: Terry Griffin
Sr. Student Services Coordinator

SUBJECT: Student Housing and Roommate Information

DATE: March 5, 2019

=====

Enclosed is information on housing, some of which was provided to us by past students. Many current dental students live in the Roxborough area of the city. Other nice areas where students may reside include, East Falls, Center City, the Northeast, Manayunk, Audubon, PA, Conshohocken, PA, Upper Darby, PA, etc.

The inner city areas are approximately 20 minutes from the school by car. The suburban areas in Montgomery County are approximately 30 to 45 minutes away by car.

The Real Estate Agents listed are for assistance with apartment leasing. If you are thinking about purchasing property to gain PA residency status, please note that this will not guarantee residency and students have been denied PA residency after buying property.

You should contact the various apartment complexes if you are interested in visiting them. Center City is best suited for public transportation as parking may be a problem in that area. If you have a pet, please note that some places will not allow dogs. Please make contact with each location for specific price information. Some students share 2-bedroom apartments to save expenses. The following pages include direct numbers for each apartment complex and advertisements for some. Toll free numbers are also available on some of the attached ads.

This is a bi-annual document. Please review the enclosed descriptions and **call or visit the websites** for the most updated information on pricing, etc. **Please do not sign a lease before visiting the location and having all of your questions/concerns addressed by the leasing agent.** If you have any questions, please email me at terry.griffin@temple.edu or call 215-707-2952.

If you have questions about Philadelphia's transit system (city buses, trolleys and trains and regional rail lines), please visit the Southeastern Pennsylvania Transit System (SEPTA) at www.septa.org. For Temple University shuttle bus service areas and schedules, please visit the Temple University Office of Parking Services at www.temple.edu/parking.

Housing, Roommates, Student Life

If you would like to communicate with other incoming freshmen students, please click on the link below to join the facebook page created by one of your classmates. There you can discuss housing locations and pricing, roommate options, transportation schedules, carpooling, and so on. Please be informed that it is the student's responsibility to choose a roommate(s) that may be suitable for them. The school does not get involved and will not interfere with these arrangements. Please discuss all issues and concerns before making a commitment.

<https://www.facebook.com/groups/276612763203778/>

The following information is provided as a service to students and in no way reflects all of the available housing in the Philadelphia and suburban areas. Nor is it an endorsement of any particular housing complex, realtor, or section of the city.

ROXBOROUGH/MANAYUNK

One of the most popular areas for our students to reside, Roxborough is a nice, suburban-like area of Philadelphia about 15 to 20 minutes by car from campus. This area abuts an 8,700 acre park system and a bike trail and horseback path that extends for 22 miles along the Wissahickon Creek. A shopping center with food markets, banks, department stores and restaurants is nearby.

Summit Park – 8201 Henry Avenue – (215) 482-0788

Summit Gardens – 701 Summit Avenue – (215) 482-0788

Valley High Apartments – 7950 Henry Avenue – (215) 482-8999

Woodmere Apartments – 8200 Henry Avenue (215) 482-4246

Henry-on-the-Park – 7901 Henry Avenue (215) 487-4400

Donna Court – 631 Dupont Street (215) 488-7182

DuPont Towers – 6100 Henry Avenue (215) 488-7182

Leverington Court – 631 Leverington Avenue – 215-488-7182

Ridgeview – 6725 Ridge Avenue, 215-483-1100

Ridge Court – 7014 Ridge Avenue – 215-482-4200

The Ridge – 7949 Ridge Avenue – 215-482-4200

Rock Hill – 205 Rock Street – 215-487-7300

The Metropolitan – 7481 Ridge Avenue A-110 – (215) 483-5656

EAST FALLS/MANAYUNK

A popular area of Philadelphia for Kornberg dental students. It is relatively inexpensive and is located about 15 minutes by car from campus. Here are two of the many apartment options in this area. Please visit the internet for additional options.

Venice Lofts Apartments – 4601 Flat Rock Road – (215) 483-4090 (may be pet friendly)

Charlwin Apartments, 3024 W. Queen Lane (under new mgt. call this number for info.) 215-526-5100

Carlton Park – 2800-2900 Midvale Avenue – (under new mgt. call this number for info.) 215-526-5100

CITY AVENUE AREA

Also an area of Philadelphia that has been recommended by students - It is not too pricey and is in good proximity to the School.

Lincoln Green – 4000 Presidential Boulevard – (215) 477-5454

Imperial Towers – 3901 Conshohocken Avenue – (215) 703-5299

Greenbriar Club – 3801 Conshohocken Avenue – (215) 473-9194

The Metropolitan Bala – 2746 Belmont Avenue – (215) 879-1900

Presidential City – 3900 City Avenue – (215) -883-1036

THE NORTHEAST AREA

The Northeast area of Philadelphia is urban, yet has a suburban feel. Many restaurants and shopping areas are easily accessible. It is located about 20 minutes from campus and apartment pricing is reasonable. Here are two website options to consider when researching leasing opportunities in this area. These websites may also have listings for Roxborough and Chestnut Hill that are not mentioned in this listing.

www.lisspropertygroup.com

www.galmangroup.com

MOUNT AIRY - CHESTNUT HILL

Chestnut Hill is a nice area located in the northwest region of the city. Similar to the northeast, it is urban, yet has a suburban feel. There are many shops in this area, including antique stores and galleries. You may wish to contact the apartment below and/or search the internet for leasing opportunities in this area.

Cheerokee Apartments – 7715 McCallum Street – (215) 247-3501

Pelham Park Apartments – 229 W. Upsal Street, (215) 844-1500

NORTH PHILADELPHIA

The apartments listed in this area are steps away from the Broad Street subway line, affording Easy, convenient transport to Temple's Health Sciences campus, Temple's Main campus and downtown Philadelphia.

York North Apartments – 1320 W. Somerville Avenue – (215) 392-0187

Lofts 640 - 640 N. Broad Street – (215) 232-4150

The Packard Motor Car Building – 317 N. Broad Street – (215) 351-0930

CENTER CITY & Surrounding Area

Center City offers good public transportation, restaurants, extensive shopping, entertainment, museum and cultural events. It takes about 15 minutes to reach campus by the Broad Street Subway. If you have a car we do not recommend this area as parking can be very expensive. You may wish to contact the apartments or realtors below for possible leasing options in Center City.

Vida Apartments – 15th between Walnut and Locust Streets – (215) 241-0200

PMC Property Group handles many apartments in Center City area – (215) 241-0200

The Versailles - 1530 Locust Street – (215) 545-6008

Adelphia House – 1229 Chestnut Street – (215) 241-0200

Chocolate Works – 231 N. 3rd Street – (267) 908-6258

Chancellor Associates – handles several apartment buildings in Center City area - 1324 Locust Street - (215) 735-8404

The Franklin Residences – 834 Chestnut Street – (215) 629-9900

ART MUSEUM AREA

This is probably the most popular area for professionals in the city because of its proximity to the world-class Philadelphia Art Museum. The neighborhoods are close and tight-knit, secure and quaint. About ten minutes from Center City and fifteen minutes from the School of Dentistry. You may wish to contact the apartments or realtors below for possible leasing options in this area.

Park Towne Place - 2200 Ben Franklin Parkway – (215) 568-2200

NorthXNorthwest – 450 N. 18th Street – 215-569-0090

JMH Realty Concepts – (215) 763-6300 (added to the list for apt. leasing only)

William Penn Realty Group – (215) 636-0300 (added to the list for apt. leasing only)

SUBURBAN AREAS (Montgomery County)

The suburban sections of Montgomery County are popular locations for married students. These apartments are located approximately 30 to 45 minutes from campus by car.

Brookview – 235 Ashbourne Road – Elkins Park, PA – (215) 635-6164

Sussex Square – 515 Plymouth Road – Plymouth Meeting, PA – (610) 828-5051

Audubon Court Apartments – 2828 Egypt Road – Audubon, PA – (610) 666-7711

Melrose Station – 902 Valley Road #27B – Melrose Park, PA – (215) 645-4263

Colony Arms – 2800 Colony Drive – Audubon, PA – (610) 666-6648

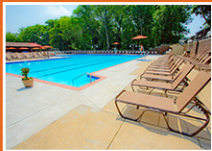
Towers at Wyncote – 8440 Limekiln Pike – Wyncote, PA – 844-873-1675

Drexelbrook Apartments – 4812 Drexelbrook Drive – Drexel Hill, PA – (484) 521-2000

HAVE FUN WHERE YOU LIVE



SUMMIT PARK COMMUNITIES



BECOME PART OF THE LIFESTYLE

Why resort to living just anywhere, when where you live can feel like a resort? Become part of the lifestyle and social scene of Summit Park.

- + Flat monthly utility fee includes: Heat, central air water, gas, electric and cable
- + Private balconies and patios
- + New kitchens with espresso cabinets, quartz countertops and stainless steel appliances available

- ✓ Resort Style Pool with Sundeck and Heated Indoor Pool
- ✓ State of the Art Gym/Fitness Classes
- ✓ Dog/Cats Welcome! On-Site Dog Park
- ✓ On-site Tennis, Basketball & Sand Volleyball Courts
- ✓ On-site Bar & Grill
- ✓ Weekend Shuttle to Temple University, Main St Manayunk, Center City and Conshohocken
- ✓ Minutes to Center City, Manayunk, Temple, King of Prussia, Chestnut Hill & Conshohocken

Summit Park
SummitPhilly.com

Summit Park Communities
8201 Henry Avenue
Philadelphia, PA 19128

215-482-0788
Fax : 215-482-3145
Summitpark@uchweb.com

www.SummitPhilly.com

Summit Park
SummitPhilly.com

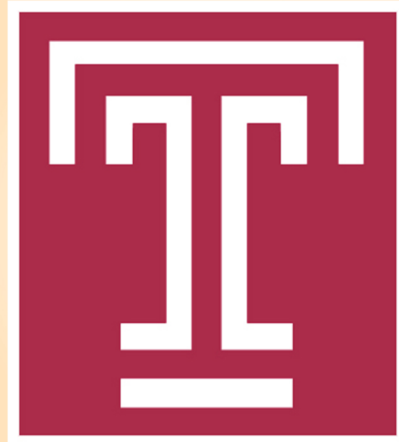
HEY SUMMIT PARK COMMUNITIES!

YOUR SHUTTLE HAS ARRIVED!

THE SUMMIT PARK SHUTTLE SCHEDULE IS HERE!

Go to Summitphilly.com to see when our bus will be running to Main Street Manayunk, Center City, Temple University and Conshohocken.

Weekday shuttle
service to **Temple
University Dental,
Medical, Pharmacy,
Physical Therapy &
Nursing Schools!**



Buses depart
for Temple U. : **7AM & 8AM**
Buses return
to Summit Park : **4:30PM & 5:30PM**

The shuttle will run to Broad and Allegheny with the first bus departing from the Summit Park office. Pick up will be on Broad and Rising Sun Ave.

HAVE FUN WHERE YOU LIVE



SUMMIT GARDENS APARTMENTS



BECOME PART OF THE LIFESTYLE

Why resort to living just anywhere, when where you live can feel like a resort? Become part of the lifestyle and social scene of Summit Gardens.

- + Utilities Included in the rent: Heat, water, gas, and snow removal
- + On-site pool and laundry facilities
- + Renovated contemporary kitchens with gas range stoves, full size refrigerators, dishwashers and garbage disposals

- ✓ Resort Style Pool with Sundeck and Heated Indoor Pool
- ✓ State of the Art Gym/Fitness Classes
- ✓ Tennis, Basketball & Sand Volleyball Courts
- ✓ Bar & Grill
- ✓ Shuttle to Temple University, Main St Manayunk, Center City and Conshohocken
- ✓ Minutes to Center City, Manayunk, Temple, King of Prussia, Chestnut Hill & Conshohocken

Summit Park
SummitPhilly.com

Summit Gardens Apartments
701 Summit Ave
Philadelphia, PA 19128

215-482-0788
Fax : 215-482-3145
SummitPark@uchweb.com

www.SummitPhilly.com

HAVE FUN WHERE YOU LIVE



VALLEY HIGH APARTMENTS



BECOME PART OF THE LIFESTYLE

Why resort to living just anywhere, when where you live can feel like a resort? Become part of the lifestyle and social scene of Valley High.

- + Utilities Included in the rent: Heat, water, gas, and snow removal
- + Washer/dryer in every home
- + Private entrances
- + Private balconies and patios

- ✓ Resort Style Pool with Sundeck and Heated Indoor Pool
- ✓ State of the Art Gym/Fitness Classes
- ✓ Tennis, Basketball & Sand Volleyball Courts
- ✓ Bar & Grill
- ✓ Shuttle to Temple University, Main St Manayunk, Center City and Conshohocken
- ✓ Minutes to Center City, Manayunk, Temple, King of Prussia, Chestnut Hill & Conshohocken

Summit Park
SummitPhilly.com

Valley High Apartments
7950 Henry Ave #32A
Philadelphia, PA 19128

215-482-8999
Fax : 215-482-3200
Valleyhigh@uchweb.com

www.SummitPhilly.com

HAVE FUN WHERE YOU LIVE



WOODMERE APARTMENTS



BECOME PART OF THE LIFESTYLE

Why resort to living just anywhere, when where you live can feel like a resort? Become part of the lifestyle and social scene of Woodmere Apartments.

- + Flat monthly utility fee which includes heat, water, gas, cable, electric and snow removal
- + Private balconies and patios
- + Renovated contemporary kitchens with gas range stoves, full size refrigerators, dishwashers and garbage disposals

- ✓ Resort Style Pool with Sundeck and Heated Indoor Pool
- ✓ State of the Art Gym/Fitness Classes
- ✓ On-site Tennis, Basketball & Sand Volleyball Courts
- ✓ On-site Bar & Grill
- ✓ Shuttle to Temple University, Main St Manayunk, Center City and Conshohocken
- ✓ Minutes to Center City, Manayunk, Temple, King of Prussia, Chestnut Hill & Conshohocken

Summit Park
SummitPhilly.com

Woodmere Apartments
8200 Henry Ave.
Rental Office E-9
Philadelphia, PA 19128

215-482-4246
Fax : 215-482-6661
Woodmere@uchweb.com

www.SummitPhilly.com

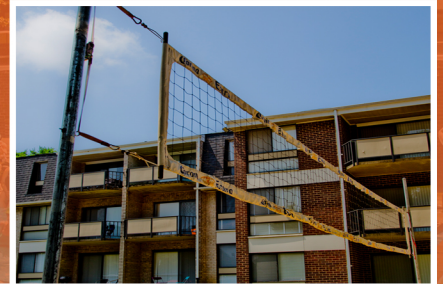
SUMMIT PARK COMMUNITIES



OUTDOOR POOL



RESORT STYLE SUNDECK



SAND VOLLEYBALL COURT



ON-SITE DOG PARK



ON-SITE BAR & GRILL



FULL SIZED TENNIS COURT



FITNESS CENTER



SHUTTLE BUS



ON-SITE GYM



INDOOR POOL



BASKETBALL COURT



ON-SITE CLUBHOUSE

BECOME PART OF THE LIFESTYLE

COMPARE FOR YOURSELF!

**2ND****3RD**

FLAT MONTHLY UTILITY FEE (HEAT, WATER, GAS, ELECTRIC & CABLE INCLUDED!)	YES	<input type="text"/>	<input type="text"/>
LARGE FLOOR TO CEILING WINDOWS	YES	<input type="text"/>	<input type="text"/>
RENOVATED CONTEMPORARY KITCHENS (GARBAGE DISPOSAL & DISHWASHER INCLUDED)	YES	<input type="text"/>	<input type="text"/>
PRIVATE BALCONIES AND PATIOS	YES	<input type="text"/>	<input type="text"/>
ON-SITE LAUNDRY CENTERS	YES	<input type="text"/>	<input type="text"/>
SPACIOUS CLOSETS WITH BUILT IN SHELIVING	YES	<input type="text"/>	<input type="text"/>
WALL TO WALL CARPETS STANDARD	YES	<input type="text"/>	<input type="text"/>
FITNESS CENTER (OPEN DAILY 6AM-10PM)	YES	<input type="text"/>	<input type="text"/>
OLYMPIC SIZED SWIMMING POOL	YES	<input type="text"/>	<input type="text"/>
INDOOR SWIMMING POOL	YES	<input type="text"/>	<input type="text"/>
TENNIS COURTS	YES	<input type="text"/>	<input type="text"/>
BASKETBALL COURT	YES	<input type="text"/>	<input type="text"/>
SAND VOLLEYBALL COURT	YES	<input type="text"/>	<input type="text"/>
ON-SITE BAR & GRILL	YES	<input type="text"/>	<input type="text"/>
ON-SITE DOG PARK	YES	<input type="text"/>	<input type="text"/>
CLUBHOUSE ACTIVITIES DIRECTOR	YES	<input type="text"/>	<input type="text"/>
MONTHLY NEWSLETTER	YES	<input type="text"/>	<input type="text"/>
DOG/CAT FRIENDLY	YES	<input type="text"/>	<input type="text"/>
ON-SITE PARKING	YES	<input type="text"/>	<input type="text"/>
PROFESSIONAL MANAGEMENT ON-SITE	YES	<input type="text"/>	<input type="text"/>
COURTESY PATROL	YES	<input type="text"/>	<input type="text"/>
24 HOUR EMERGENCY MAINTENANCE	YES	<input type="text"/>	<input type="text"/>
WALKING DISTANCE TO PUBLIC TRANSPORTATION	YES	<input type="text"/>	<input type="text"/>
MINUTES TO CENTER CITY, MANAYUNK, KING OF PRUSSIA, CHESTNUT HILL, & CONSHOHOCKEN	YES	<input type="text"/>	<input type="text"/>
CONVENIENT TO SHOPPING (CVS, ACME, KOHLS)	YES	<input type="text"/>	<input type="text"/>

SUMMIT PARK COMMUNITIES

8201 HENRY AVENUE PHILADELPHIA, PA 19128

PHONE: 215-482-0788 FAX: 215-482-3145

EMAIL: SUMMITPARK@UCHWEB.COM



July Fitness Schedule

#GETFITWHEREYOU LIVE

MON	TUE	WED	THU	FRI	SAT	SUN
<p>6:00-6:45pm HIIT Fitness w/ Eileen</p> <p>7:00-8:00pm Zumba w/ Sue <u>only on July</u> <u>2nd (moved to</u> <u>Tuesday every</u> <u>other week)</u></p>	<p>6:00-6:45pm Zumba w/ Sue (no class 7/3)</p> <p>7:00-8:00pm Pump w/ Val/Brooke</p>	<p>6:30-7:30pm Cardio Kick-Box w/ Ron (no class 7/4)</p>	<p>5:30-6:30pm AquaFit w/ Miles</p> <p>6:00-7:00pm Group Training w/ Joe (no class 7/5)</p> <p>7:00-8:00pm Yoga w/ Miles</p>			

SPECIALS OF THE MONTH

AquaFit now OUTSIDE! - Thursdays @ 5:30pm
 Special Aqua Zumba - Saturday, July 14th @ 11am
 Wine and Candlelight Yoga - Thursday, July 26th @ 7pm



4601 Flat Rock Road
Philadelphia PA 19127
215.483.4090
VeniceLoftsApts.com

The Dranoff Distinction.

Philadelphia-based Dranoff Properties has established a reputation for creating some of the most vibrant live-work-play communities a city can offer.

From expert design and construction through to completion and management, our award-winning team assures each property in our expanding portfolio is built to the highest standards. Not only are all of our properties developed, owned and managed by Dranoff Properties, they remain important anchors to their community for generations to come. Each and every detail has been thoughtfully considered. And our attentive staff, dedicated 24-hour concierge services and unmatched amenities make the experience of living in a Dranoff Property truly exceptional. That's the Dranoff Distinction.



Excellence in Urban Living

DranoffProperties.com



THE FRANKLIN RESIDENCES

The Franklin is ideally located in the heart of the center city district of Philadelphia. You will find shopping, dining, and public transportation at your doorstep. Scenic Washington Square is just a few blocks South, Historic Old City a short walk to the east, and trendy Rittenhouse Square to the west. Experience the lifestyle and convenience available for business professionals and residents who want more out of every day living.

franklinresidences.com



The Franklin
834 Chestnut Street
Philadelphia, PA 19107

Contact:
215.629.9900
inquiries@
franklinresidences.com

Amenities

- daily valet dry cleaning and laundering services
- 24 hour resident services desk
- lobby lounge with free wifi access
- on-site management and maintenance
- newly designed fitness center with state-of-the-art equipment
- friendly, attentive staff
- valet garage parking on-site
- package acceptance service
- convenient lobby level restaurant

Suites

- flexible lease terms
- sophisticated, fully furnished one and two bedroom suites with spacious floor plans
- custom designed furniture
- sony flat screen televisions in living and bedroom(s)
- DVD players in living rooms
- complimentary high speed wireless internet access
- complimentary unlimited local telephone service
- complimentary premium cable television with HBO
- all utilities included; no cap
- washer/dryer en suite
- full complement of kitchen and linen appointments
- egyptian cotton sheets
- aveda bath products

Penthouses

- Nestled on the 18th and 19th floors, each bi-level penthouse is characterized by a unique layout with streaming natural light, expansive city views, perfect for both relaxing and entertaining.
- available furnished and unfurnished
- upgraded kitchens with granite countertops and stainless steel appliances
- spacious master bedrooms featuring king size beds and custom, walk-in closet spaces
- private penthouse elevator access

Rates

- 1 br/1 bath** \$115-\$140/day
- 2 br/2 bath** \$170-\$195/day
- bi-level 2 br plus den penthouse** \$295-\$325/day

Charlwin Apartments

3024 W. Queen Lane
Philadelphia, PA 19129
(215) 848-2100

www.classicmgt.com



- + Convenient Washer/Dryer
- + Hardwood Floors
- + A/C in Bedrooms & Living Room
- + Dishwashers Available
- + Pet Friendly (cats ok)
- + Free Parking
- + Garages Available
- + Quiet Location, close to public transportation
- + Access controlled Front Entrance



Inquire About Monthly Specials

www.classicmgt.com

Charlwin is centrally located with easy access to City Line Avenue, Center City, Main Street in Manayunk & Delaware Avenue attractions. Charlwin is convenient to public transportation and within minutes from I-76 and Route 1. Charlwin Apartments is close to much of what Philadelphia has to offer. It is next door to Drexel School of Medicine, down the street from Philadelphia University and within minutes of La Salle. At Charlwin, you'll find yourself close to Wissahickon Park's bike and hiking trails not to mention the area's premier restaurants unsurpassed theaters, upscale shopping, amazing museums and cultural activities.

2 bedroom/1 bath – \$895/837 sq ft
Deluxe 2 bedroom/1bath – \$995/877 sq ft
3 bedrooms/2bath - \$1300/1380sq ft

Please contact for updated
Pricing information

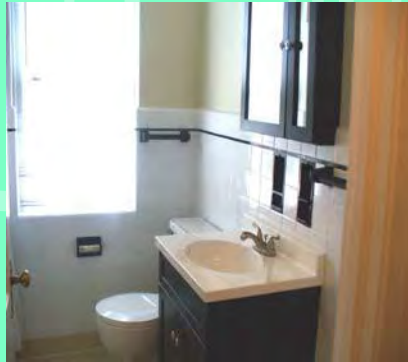


Classic
Management Inc.

Carlton Park Apartments!
2800-2900 Midvale Avenue
Philadelphia, PA 19129
(215) 848-2100
www.classicmgt.com



- + Convenient Washer/Dryer
- + Beautifully Landscaped, Quaint Village Setting
- + Gardening Areas
- + Private Backyard Entrances*
- + Beautifully Detailed Parquet/Hardwood Floors
- + Dishwasher
- + Garages & Reserved Spaces Available
- + Quiet Location, close to public transportation
- + Central Air/Heat
- + Pet Friendly (cats & small dogs ok -40lbs)



Inquire About Monthly Specials

www.classicmgt.com

At Carlton Park our meticulously manicured estate will be impressive, and the serene prestigious East Falls location will also astound you. Carlton Park is centrally located with easy access to City Line Avenue, Center City, Chestnut Hill and within minutes from I-76, Route 1, Kelly Drive and Lincoln Drive. Carlton Park's quaint village setting gives all of the charm of a "colonial" ambiance. Elegance and luxury make Carlton Park a truly unique living experience.

Small 2 bedroom \$895/656 sq ft
Large 2 bedroom \$995/858 sq ft

Please contact for
updated pricing



Classic
Management Inc.

Lincoln Green Apartments

**4000 Presidential Blvd
Philadelphia PA, 19131**

215-477-5454

Please visit website for information and pricing

www.lincolngreenapartments.com

Imperial Towers

3801 Conshohocken Avenue

215-703-5299

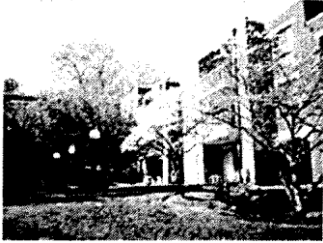
**Imperial Towers is located near the main line, moments
away from shops, entertainment and eateries of
City line Avenue.**

**Bus and train routes are close by
on-site and underground parking is available, etc.**

Please visit website for more details

www.scullycompany.com

Apartment guide



Greenbriar Club Apartments

3901 Conshohocken Avenue
Philadelphia, PA

Call Us
1 (866)
739-3320

BEST OF THE CITY AND SUBURBS. Elegant brick construction garden apartments amidst lounam, archways, detailed landscaping and intercom system. A premium location near Main Line shopping, hospitals, universities and the pleasures of Center City.

apartmentguide.com

Metropolitan Bala

2746 Belmont Avenue

215-878-2826

Suburban living within minutes of Center City

**Located one block from City Line Avenue's shopping
centers and restaurants**

Public Transportation at your door

Please visit the website at

www.yourmetropolitan.com

CHEROKEE APARTMENTS



Mid-century modern apartments located in the heart of
C H E S T N U T H I L L

- Hardwood floors
- Renovated kitchens
- Balconies*
- Garages*
- Townhouses*
- Storage
- Sculpture garden
- Adjacent to Wissahickon Valley Park



Type	Sizes (Sq Ft)	Type	Sizes
1 Bed 1 Bath	628	2 Bed 2 Bath	1,228
1 Bed 1 Bath	812	2 Bed 1 Bath TH	1,733
2 Bed 1 Bath	990	3 Bed 2 Bath TH	1,540
2 Bed 1.5 Bath	1,010	3 Bed 2.5 Bath	1,575
2 Bed 1 Bath	1,155	3 Bed 2 Bath	1,768
		3 Bed 3.5 Bath TH	1,930



As featured on the Chestnut Hill Historical Society's tour of mid-century modern architecture



7715 McCallum St
 Philadelphia, PA 19118
 (267) 900-2710

Melrose Station Apartments

Suburban living within minutes of Center City

Please visit the website at

www.forrent.com

866-927-7681



CALL TODAY! DON'T MISS OUT ON OUR GREAT LEASE DEALS!

(215) 635-6164

www.eaglerockbrookview.com

An Eagle Rock Community





CALL TODAY! DON'T MISS OUT ON OUR GREAT LEASE DEALS!

(215) 635-6164

www.eaglerockbrookview.com

An Eagle Rock Community



BROOKVIEW APARTMENTS
AT **ELKINS PARK**



An Eagle Rock Community